



Food factory Stute, Paderborn

Essential info

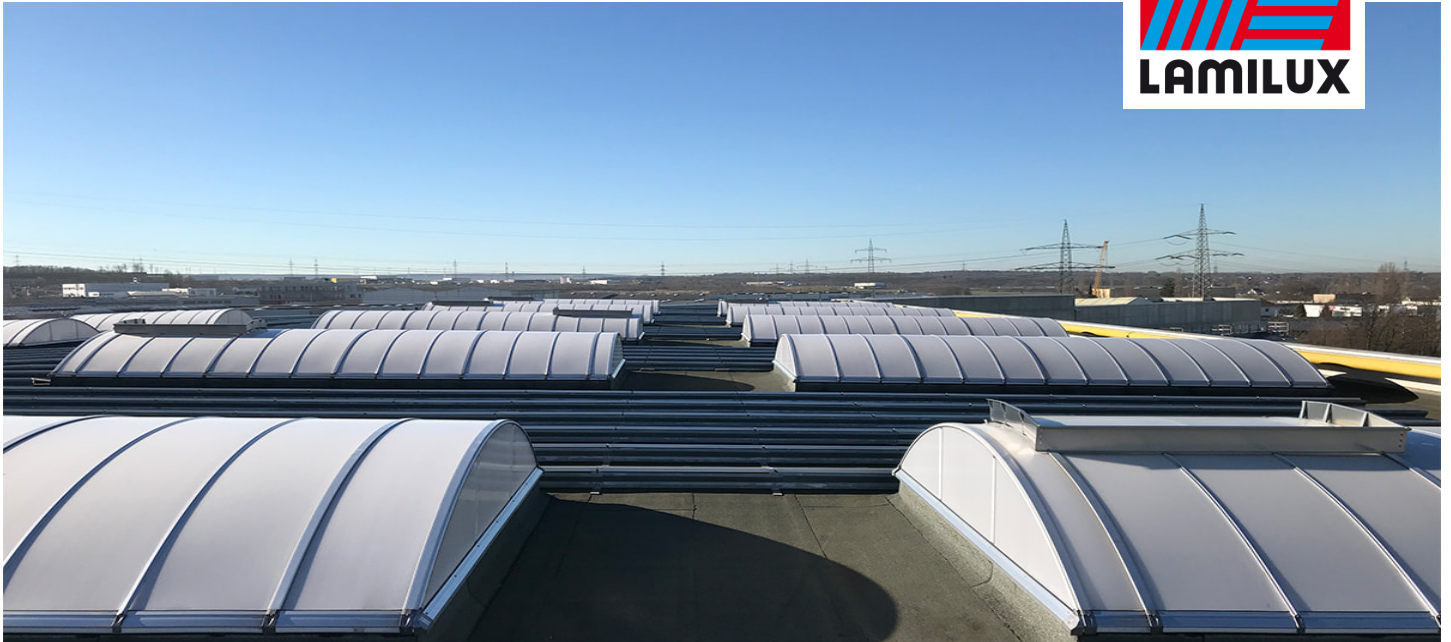
Place / Country:	Paderborn, Germany
Year:	2018
Building type:	Industrial hall
Solutions:	LAMILUX Continuous Rooflight B LAMILUX Smoke Lift Continuous Rooflight B

Complete remodelling of the elementary school with a special focus on energy efficiency to ensure sustainable building management.

- Linear daylight systems with 3° pitch, made of thermally separated, high-strength aluminium composite system with continuously foamed core composite sections and double seal system
- Laminated safety glazing with insulation glass, Ug value 1.1 W/(m²K)
- Daylight element pre-assembled on upstands made of glass-fibre-reinforced composite filled with PU foam (CFC-free)
- Daylight systems opened and closed using electric motorised openers

Reference

CI-System Glaselement F



Food factory Stute, Paderborn



LAMILUX HEINRICH STRUNZ GMBH

POB 1540 - 95105 Rehau/Germany - Phone: +49 (0)9283/595-0 - Fax: +49 (0)9283/595-290

E-Mail: information@lamilux.com - www.lamilux.com