



# CI-System Light Architecture M

compact - filigree - modular





## The CI System Light Architecture M

compact material usage - filigree design - modular freedom

LAMILUX developed the CI System Constructive Glass Design M with your product needs in mind. The "M" stands for a compact yet very filigree modular construction which guarantees you architectural freedom and a variety of applications.

**The CI System Light Architecture M is the ideal complement to our CI System Light Architecture KWS 60.**

Whether as a hipped, gabled or pyramid-shaped roof, aesthetically demanding constructive glass design and standardised components need not be a contradiction. Rather, they offer many advantages such as quick planning and assembly, thereby saving you time. The filigree appearance of the support structure, with a slender ridge profile and foot profile as well as the absence of a cross profile offers a maximum in natural light.

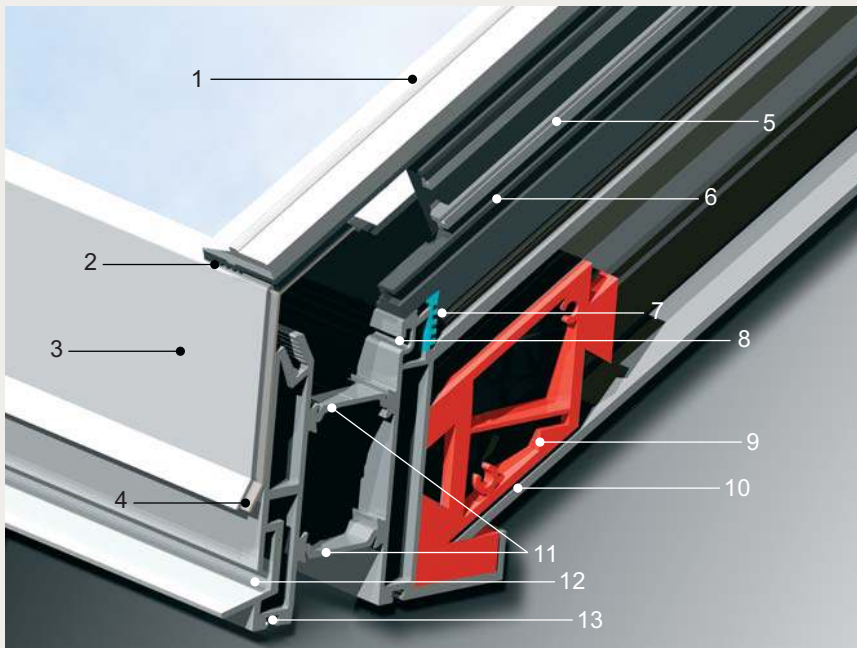
### The case for thermal technology – Optimisation of the isothermic courses in our patented system.

We've patented the thermal-bridge-free design!

A sophisticated complete system at the base demonstrates state-of-the-art thermal technology. LAMILUX lives its CI Systems philosophy "Serving the customer is our policy" beginning in the product research and development stage.

### ITL – the isotherm load converter

A component (9) based on a new technology with amazing results in optimizing isothermic courses: It guarantees a thermal-bridge-free base. The reason: The ITL directs the load to the substructure. This allows for a load- and tension-free foot profile, which in turn enables the use of filigree, high heat-insulating materials!



- 1 moulded rib flange
- 2 external seal
- 3 eave flashing
- 4 joint backing
- 5 insulating bar
- 6 internal seal
- 7 thermal ridge
- 8 support for glass holder
- 9 ITL isotherm load converter
- 10 load frame
- 11 insulating bars
- 12 support for weatherboard
- 13 foot profile



CI = customized intelligence  
Serving the customer is our policy

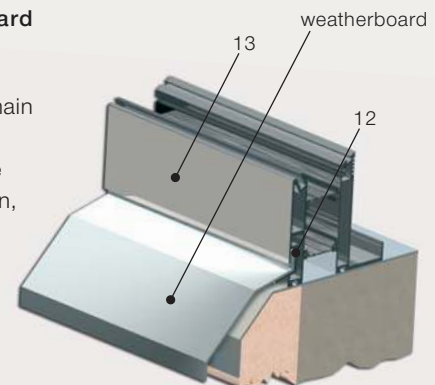
#### We live our philosophy!

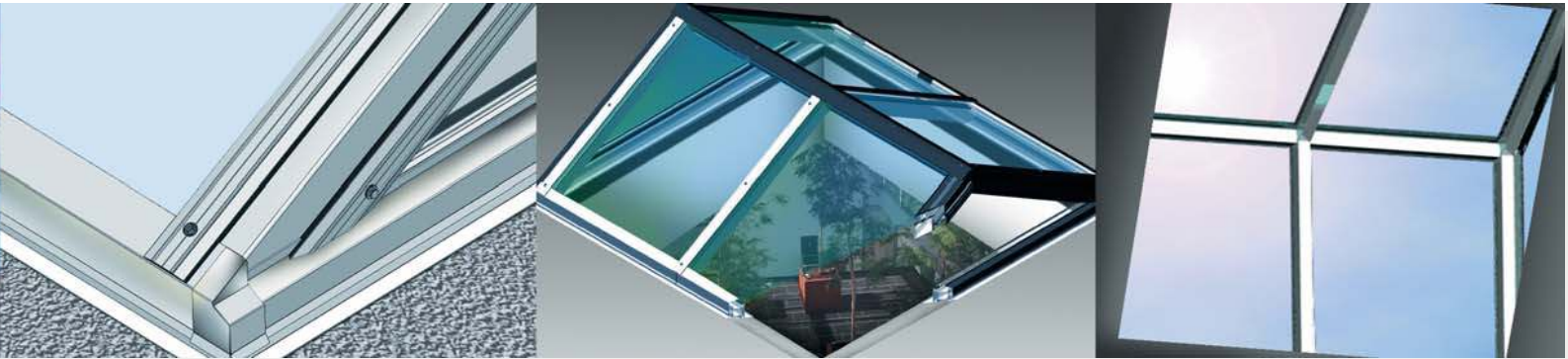
At LAMILUX this means:

- We develop the highest quality - which brings you real advantages
- We are innovative and will guide you and your projects with the best technical consultation and complete after-sales support
- We offer professionalism - fast, dependable, friendly
- Our service is customised to you - to your needs and wishes

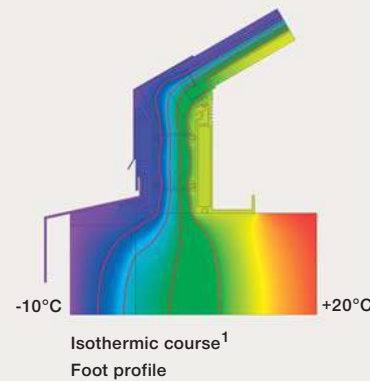
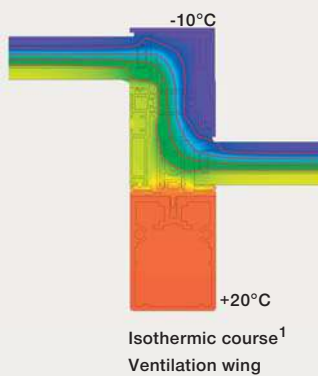
### Innovation – variable weatherboard

- enables the variable attachment to main structure
- individual fitting independent of the material and its thickness, insulation, roof caulking and parapet upstand
- greater freedom in planning
- more flexible assembly





## Optimised Isothermic Courses



Another innovation – the thermal ridge (7) – now also allows for optimised isothermic courses in the ventilation wing for closing off thermal bridges. The CI System Light Architecture M as a complete system is an essential component of an optimised building envelope: lower heating costs in the winter – less heat in the summer!

### Technology and Features

<b>Sizes:</b>	for openings from 1,00m to 4,00m, length from 1,00m continuous
<b>Inclination:</b>	30°
<b>Design:</b>	gabled roof, hipped roof and pyramid-shaped
<b>Assembly/Construction fitting:</b>	sheet metal frames, concrete parapet upstands, wood parapet upstands, assembly also on upstands for small dimensions
<b>Load-bearing structure:</b>	aluminium, supplementary equipment: RAL colour coating of visible aluminium parts
<b>Accessorie:</b>	optional ventilation function
<b>Appearance:</b>	optional smoke ventilation in compliance with DIN 18232 and DIN-EN 12101
<b>Service:</b>	slender profile with high glass quotient, filigree interior view
	project planning, delivery and assembly by LAMILUX
	maintenance of smoke and heat exhaust ventilation systems in compliance with DIN 18232 and DIN-EN 12101

### Glazing Types

Heat insulation glazing					
Opaqueness in %	Total energy transmission g in % compliance with DIN EN 410	Ug - value W/m²K / DIN EN673	Soundproof value in dB²	Type	
75	53	1,1	ca.35	WS1.1	
Solar and heat insulation glazing					
Opaqueness in %	Total energy transmission g in % compliance with DIN EN 410	Ug - value W/m²K / DIN EN673	Soundproof value in dB²	Type	
50	27	1,1	35	50/27	
60	32	1,1	35	60/32	
66	40	1,2	35	66/40	
59	48	1,2	35	59/48 Antelio-Silber	
Soundproof glass					
Opaqueness in %	Total energy transmission g in % compliance with DIN EN 410	Ug - value W/m²K / DIN EN673	Soundproof value in dB³	Type	
77	56	1,2	42	SD42	

<sup>1</sup> Exaple for glass with "warm edges"

<sup>2</sup> in compliance with DIN 4109 All specifications are approx. values

<sup>3</sup> in compliance with DIN ISO 140-3

# LAMILUX CI-SYSTEMS

**ROOFLIGHTS F80  
SMOKE AND HEAT EXHAUST VENTILATORS  
TYPE RAUHLIFT**



**LIGHT ARCHITECTURE F  
LIGHT ARCHITECTURE M**

**CONTINUOUS ROOFLIGHTS B**



**CONTINUOUS ROOFLIGHTS S**

**WINDOW WALLS**



**REFURBISHMENT**

**LIGHT ARCHITECTURE KWS60**



**SMOKE APRONS**

**SUPPLY AIR DEVICES**



**CONTROL TECHNOLOGY**

The technical specifications contained in this brochure were correct at the time of going to press and are subject to change. Our technical details are based on calculations, information received from suppliers, and the findings of independent testing in accordance with the applicable standards. Heat transfer coefficients for LAMILUX plastic glazing were calculated using the method of finite elements with reference values taken from EN 673 for insulating glass. Taking into account practical considerations and the specific characteristics of plastic, the temperature difference between external surfaces was defined as 15K. The functional values refer solely to test specimens with the dimensions for which testing was planned. No further guarantee can be given for technical values, especially if the situation regarding installation changes or measurements are revised on site.



**HEINRICH STRUNZ GMBH**

Zehstraße 2 · Postfach 1540 · 95111 Rehau/Germany · Tel.: +49 92 83/5 95-0 · Fax: +49 92 83/5 95-29 0

E-Mail: [information@lamilux.de](mailto:information@lamilux.de) · [www.lamilux.com](http://www.lamilux.com)



QM-System  
zertifiziert nach  
DIN EN ISO 9001

