

A380 Assembly Hangar

Essential info

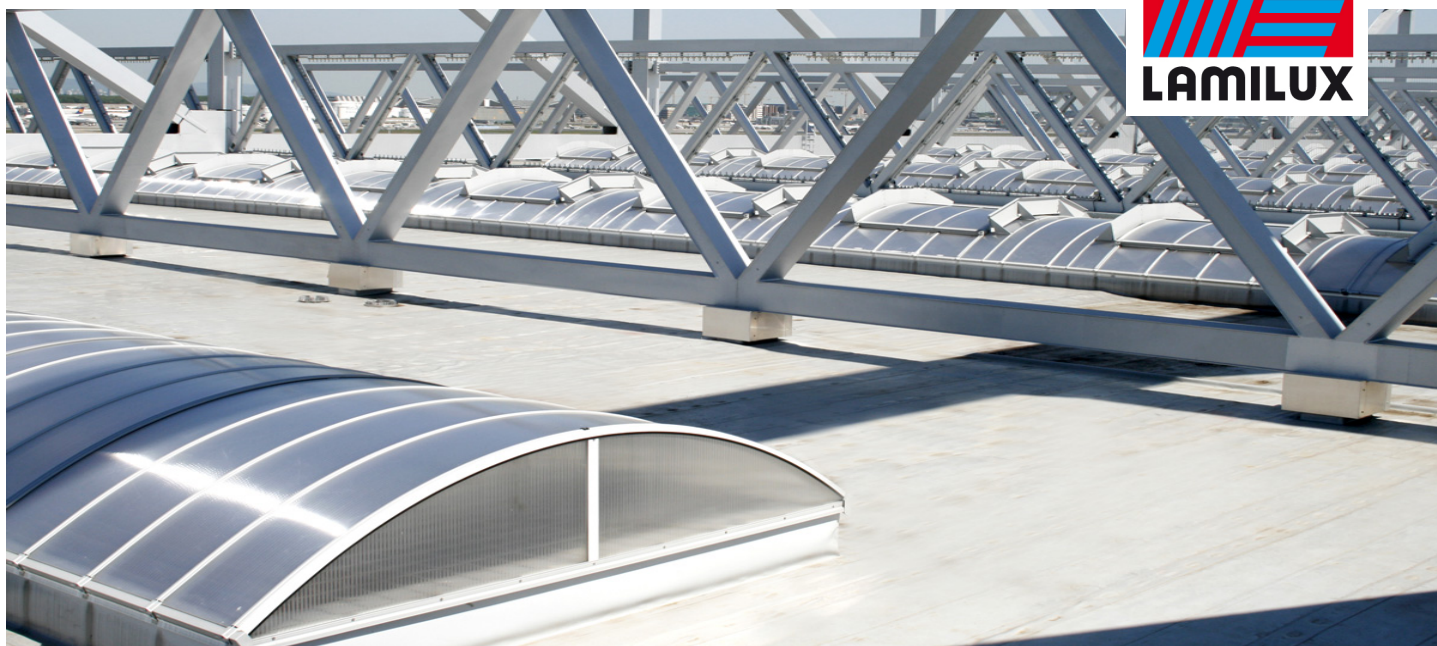
Place / country:	Frankfurt, Germany
Year:	2008
Building type:	Production hangar
Solutions:	CI System Continuous Rooflight B Multi-layer polycarbonate glazing CI System Smoke Lift B Pneumatic tandem interlocks Fall-through protection grating PPE anchorage points

Bright, non-glare lighting of hangar interior and integration of combined SHEV and ventilation function for permanently reliable usage. Guarantee of personal safety and the stability of the continuous rooflights and SHEV flaps.

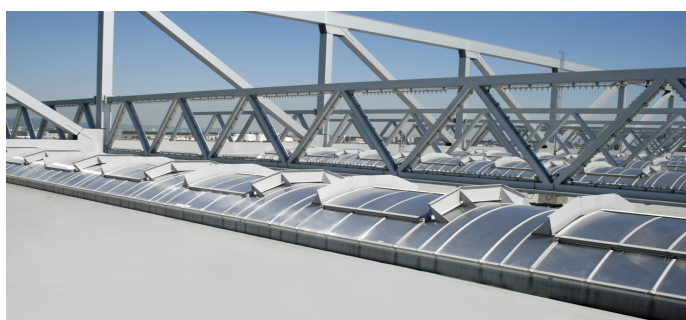
- Multi-layer polycarbonate glazing, clear, non-glare and surface-treated
- Double flap systems equipped with wind baffles
- Pneumatic tandem interlocks to prevent sudden opening of flaps due to wind pressure and suction effect
- Connection to the building control system, implementation of complete control and release technology for smoke and heat exhaust and ventilation functions in the double flaps
- All continuous rooflights, fall-through protection gratings and SHEV flaps coated in client-specific colour



LAMILUX CI-System Lichtband B



A380 Assembly Hangar



LAMILUX HEINRICH STRUNZ GMBH

Zehstraße 2 - Postfach 1540 - 95105 Rehau/□□ - □□□+49/(0)92 83/5 95-0 - □□□+49/(0)92 83/5 95-29 0

□□□□□ information@lamilux.de - www.lamilux.de