



LAMILUX

## PRODUCT OVERVIEW

Customized  
Intelligence

Serving the customer is our first priority



## We live daylight



As a fourth-generation family-run business, the LAMILUX Group has stood for innovation, quality, and customer focus for decades. With over 1,300 employees, seven subsidiaries in Europe, and a turnover of €57 million in 2024, we are one of the leading manufacturers in the construction industry.

Our aim is to develop sustainable products that fill living spaces with natural daylight, thus harmonizing well-being, energy efficiency, and safety. Because daylight is essential for the human body.

That's why we create the right solution for every building with our wide range of Skylights: whether it's Continuous Rooflights or Rooflight Domes for industrial halls, large Glass Roofs for shopping centers, Flat Roof Skylights for schools or residential buildings, or Skylights for energy-efficient passive houses.

Our Skylights not only provide maximum light incidence, but can also be used for natural ventilation and fire protection as smoke and heat exhaust ventilators (SHEV).



**65**

years of experience



**171,000m<sup>2</sup>**

Continuous Rooflight Systems per year



**31,000**

Syklights installed per year



**7**

subsidiaries in Europe



**357**

millions of Euros in revenue in 2024



**114**

distribution partners worldwide



**1,300**

employees in Germany



**c. 100**

trainees  
c. 8% training quota



## Our reference page - inspiration from practice

Architecture thrives on good ideas and inspiration. Our reference page therefore impressively demonstrates the versatility of LAMILUX Skylights in a wide variety of projects: from modern office buildings to sports and event halls, schools, shopping centers, and residential buildings. It's not just about the technical sophistication of our products, but also about the unique effect of the daylight we provide with them. Each project has its own individual requirements, which we share on this page and demonstrate practical solutions for how you can flood buildings with daylight. Whether it's a renovation or a complex fire protection concept, with each project we open a window into practice and provide concrete insights into how our systems combine energy efficiency, functionality, and design.

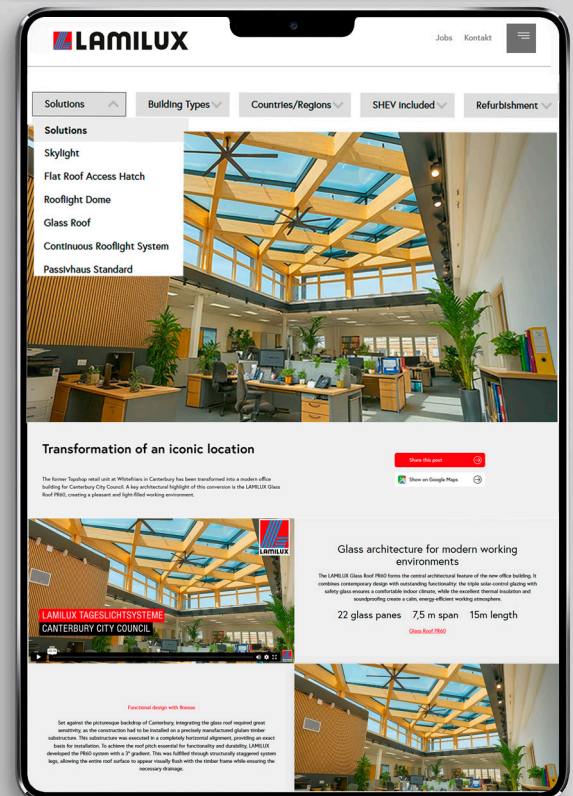
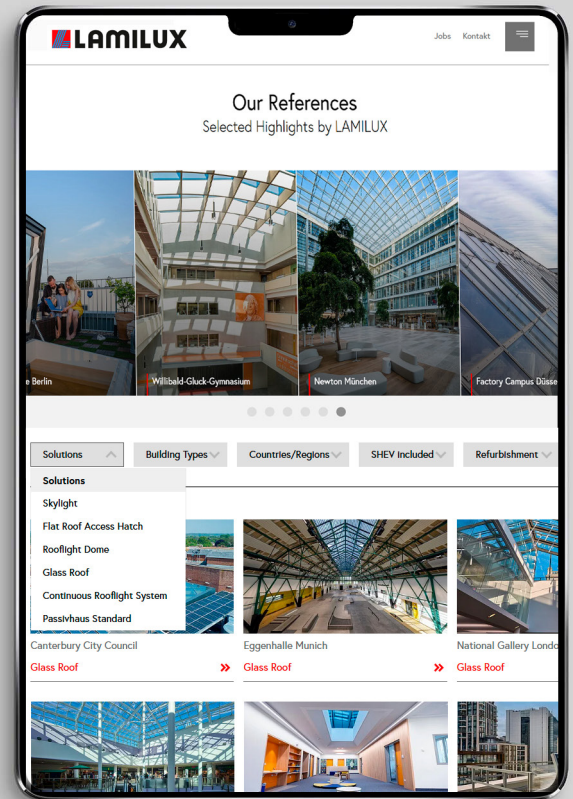
### What you can expect:

- Targeted search for every requirement: With the intelligent filter function, references can be selected by product, building type, country, but also by criteria such as smoke and heat extraction or renovation. This allows visitors to find the projects that are most relevant to their own planning in a matter of seconds.
- Real impressions instead of dry data: Extensive image galleries and videos give a vivid impression of the projects. This allows visitors to experience the architecture, lighting, and technical solutions up close.
- Right on site: Thanks to the direct Google Maps link, visitors can immediately see where the project is located. This helps them to geographically locate it in the surrounding area or even visit it themselves.
- Easy to share: With the integrated share function, exciting references can be easily sent to colleagues and partners by email or WhatsApp and shared on social media.

### Inspiration to discover

With these functions, LAMILUX offers individual inspiration exactly as it is needed. Are you planning a renovation project in England with a large-scale Glass Roof including smoke and heat extraction function? Simply enter these criteria into the search function and you will be taken to the Canterbury City Council, among other places. There, LAMILUX supported the conversion of a former retail unit into an office building for Canterbury City Council – featuring a uniquely designed and custom-planned Glass Roof PR60. Discover the reference here, including a detailed making-of video filmed right in front of Christ Church Cathedral.

Scan the QR code and visit the LAMILUX reference pages.





# LAMILUX SKYLIGHTS

DAYLIGHT AT ITS INNOVATIVE BEST

1 Continuous Rooflight S

2 Louvre Ventilator AEROJET

7 Continuous Rooflight B

3 Double Flap Ventilator PHÖNIX

8 Glass Skylight F100

4 Multi-talented Double Flap Ventilator

5 Rooflight Dome F100 W

11 Glass Skylight FE

6 Translucent Façade and Roof







13 Glass Skylight FE Pyramid / Hipped

15 Modular Glass Skylight MS78

14 Flat Roof Access Hatch Comfort

16 Glass Skylight F100/FE Circular

9 Glass Roof Fire Resistance

10 Glass Roof PR60

12 Louvre Window AIRSTREAM

Our LAMILUX Skylights  
[www.lamilux.com/skylights](http://www.lamilux.com/skylights)

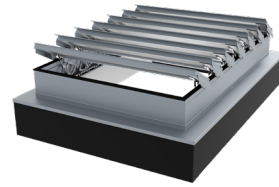






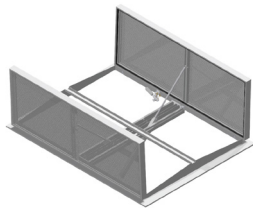
### 1 Continuous Rooflight S

The Continuous Rooflight S in a classic ridged roof design combines harmonious design with technical sophistication. Its continuous design makes it ideal for combining with photovoltaic modules, providing daylight as well as energy. The robust, thermally separated construction withstands wind and snow loads and ensures safety and efficiency in all weather conditions.



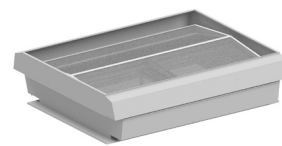
### 2 Louvre Ventilator AEROJET

The Louvre Ventilator AEROJET from roda provides energy-efficient, natural ventilation in industrial buildings. Thanks to thermal lift, it operates without electricity, is weather-independent, and is easy to install. In the event of a fire, it ensures rapid smoke extraction and improves the indoor climate and air quality in the long term.



### 3 Double Flap Ventilator PHÖNIX

The roda Double Flap Ventilator PHÖNIX enables natural, energy-free ventilation and safe smoke and heat extraction in industrial areas. It uses thermal lift for fresh air and meets the fire protection requirements of DIN EN 12101-2. The system is flexibly adaptable and, thanks to its robust construction, permanently resilient.



### 4 Multi-talented Double Flap Ventilator

The roda Multi-talented Double Flap Ventilator combines ventilation, daylight utilization, and certified smoke and heat extraction. The double flap technology allows fresh air in any weather—even when it rains. In case of fire, it opens automatically, extracts smoke and heat, and secures escape routes.



### 5 Rooflight Dome F100 W

The Rooflight Dome F100 W impresses with its innovative wave shape for high stability and optimal load distribution—even in wind, snow, or hail. Despite its lightweight construction, it is extremely durable and brings generous daylight into the building. This creates bright, friendly rooms with safety and energy efficiency.



### 6 Translucent Facade and Roof

The Translucent Facade and Roof integrates seamlessly into facades or wall surfaces and brings light exactly where it is needed. With flexible shape and inclination – from flat installation to steep roof edges – it enables clear, clean solutions with glare-free daylight, especially in renovations.



### 7 Continuous Rooflight B

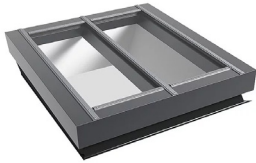
The Continuous Rooflight B impresses with its characteristic arched shape and gives daylight an architectural flair. Its continuous thermal separation with Class A airtightness minimizes energy losses and supports sustainable construction. The modular, stable design withstands hail and heavy loads.



### 8 Glass Skylight F100

The Glass Skylight F100 is the reliable and practical solution for bright rooms under any flat roof. With its robust plastic frame and genuine Made in Germany quality, it ensures permanently good thermal insulation and high tightness – even in extreme weather conditions.





## 9 Glass Roof Fire Resistance

The Glass Roof Fire Resistance combines daylight and fire protection for buildings with high safety requirements. Tested in accordance with EN 13501-2, it withstands fire and heat for 30 or 60 minutes—as a flat roof window for up to 90 minutes. Thanks to its REI classification, load-bearing capacity, room closure, and thermal insulation are maintained.



## 10 Glass Roof PR60

The Glass Roof PR60 adapts flexibly to any roof shape – from ridged and hipped roofs to polygonal solutions. The slim aluminum frame system provides daylight, protects against wind and weather, and prevents condensation with double seals. Integrated ventilation wings enable natural ventilation as well as smoke and heat extraction in the event of a fire.



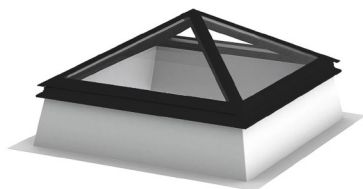
## 11 Glass Skylight FE

The Glass Skylight FE combines elegant design with maximum energy efficiency. Flush glazing and sophisticated construction ensure high insulation values and reliable drainage. Even as a passive house variant, it meets the highest standards of sustainability and comfort.



## 12 Louvre Window AIRSTREAM

The roda Louvre Window AIRSTREAM combines function and aesthetics. Adjustable louvres control ventilation and light individually, while high-quality workmanship guarantees durability and safety. With its modern design, it is suitable for projects that combine functionality, energy efficiency, and design.



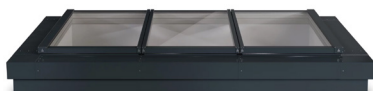
## 13 Glass Skylight FE Pyramid / Hipped

The pyramid-shaped Glass Skylight FE Pyramid / Hipped adds architectural accents and allows generous amounts of daylight into the interior. Clean lines and striking shapes create rooms with a special lighting effect that also meet the highest energy requirements.



## 14 Flat Roof Access Hatch Comfort

The Flat Roof Access Hatch Comfort provides convenient access to the roof terrace and creates bright, light-filled rooms. Large glazing and high-quality technology ensure an open living feeling, easy operation, and a space-saving solution for your private oasis of well-being.



## 15 Modular Glass Skylight MS78

The Modular Glass Skylight MS78 combines the spaciousness of a glass roof with the clarity of a flat roof window. Large-area modules flood rooms with daylight and, thanks to prefabrication, are quick to install, energy-efficient, and safe. The result is a modern solution that combines transparency, design, and function.



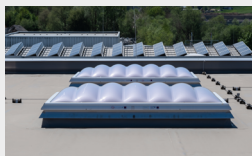
## 16 Glass Skylight F100 Circular

The Glass Skylight F100 from LAMILUX combines function and design to create an architectural highlight. It creates a special lighting atmosphere and adds a striking accent to any roof. Depending on its use, its shape can appear playful, artistic, or elegant.



# LAMILUX SKYLIGHTS

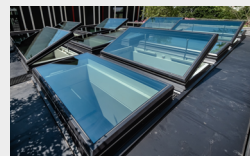
ROOFLIGHT F100 W



GLASS SKYLIGHT F100



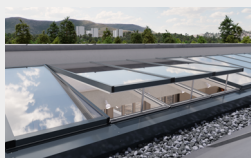
GLASS SKYLIGHT FE



GLASS ARCHITECTURE



MODULAR GLASS SKYLIGHT MS78



FLAT ROOF ACCESS HATCHES



CONTINUOUS ROOFLIGHT



RENOVATION



SMOKE AND HEAT EXHAUST



BUILDING SMOKE EXTRACTION



RODA LIGHT AND AIR TECHNOLOGY



Scan this  
to learn more  
about  
LAMILUX  
skylights!

The technical data listed in this brochure correspond to the current status at the time of printing and are subject to change. Our technical specifications are based on calculations and supplier specifications, or have been determined by independent testing authorities within the scope of applicable standards.

Thermal transmission coefficients for our plastic glazing were calculated using the finite element method with reference values in accordance with DIN EN 673 for insulated glass. Taking into account practical experience and the specific characteristics of plastic, the temperature difference between the outer surfaces of the material was defined as 15 K. Functional values refer to test specimens and the dimensions used in testing only. We cannot provide any further guarantees of technical values. This particularly applies to changed installation conditions or if dimensions are re-measured on site.



**LAMILUX Heinrich Strunz GmbH**

Zehstraße 2 . PO Box 1540 . 95111 Rehau . Tel.: +49 (0) 92 83 / 5 95-0 . Fax +49 (0) 92 83 / 5 95-29 0

E-Mail: [information@lamilux.de](mailto:information@lamilux.de) . [www.lamilux.com](http://www.lamilux.com)

