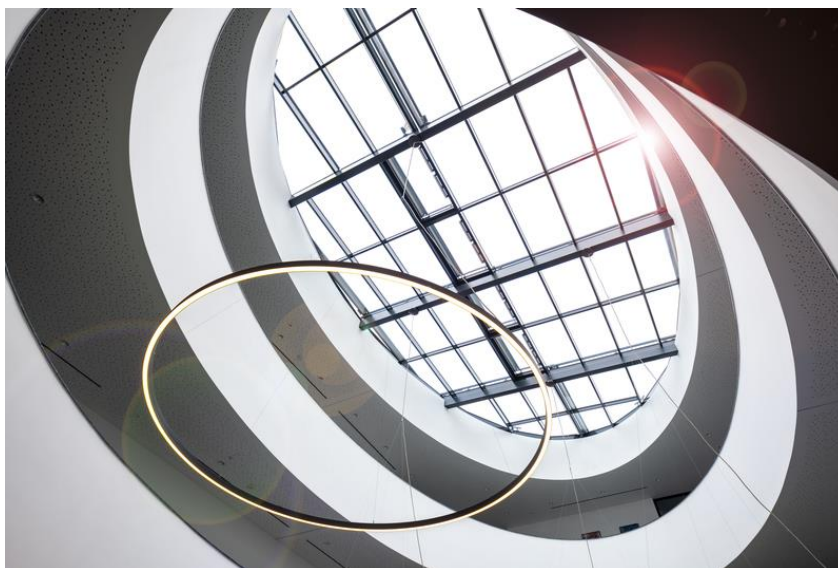


Kompetenzzentrum Breisgau relies on LAMILUX Glass Roof PR60

Working in light-flooded architecture

In the middle of the idyllic Breisgau region, between the Black Forest, Alsace and nearby Switzerland, an extraordinary new building has been constructed in Eschbach: The Kompetenzzentrum Breisgau combines modern working with a well thought-out architectural concept and a special focus on light, openness and networking. The central location near Freiburg, combined with close proximity to national borders, makes the location attractive not only for regional companies, but also for international visitors. The LAMILUX Glass Roof PR60 gives the building light-flooded rooms for collaborating and working.



Contact for the editorial office:

LAMILUX Heinrich Strunz GmbH
Celine Hofmann
Marketing Skylights
Zehstraße 2, 95111 Rehau

Phone.: +49 151 40592050
e-Mail: celine.hofmann@lamilux.de

Space for diversity and community

Across around 4,000 square metres of space, the Kompetenzzentrum offers 16 modern office units for first-time occupancy, flexibly bookable seminar and meeting rooms, an inviting co-working area and an exclusive event location with a view of the surrounding nature. A spacious lounge and a restaurant in the building also provide a meeting place outside the working day - whether for a business lunch or an after-work event on the roof terrace. Directly opposite: a hotel for overnight guests. The building is therefore ideally equipped to combine productive work with quality of life.

Light as a central design element

At the centre of the building is the spacious atrium - a communicative meeting point for employees, customers and visitors. This central space is covered by an impressive Glass Roof from LAMILUX. The filigree, oval-shaped LAMILUX Glass Roof PR60 allows daylight to flow generously into the building, creating a bright, friendly atmosphere that is effective regardless of the season or weather. It adapts individually to the surrounding curved architecture and ensures a harmonious overall appearance.

For Reinhold Noel, Managing Director of KBS-Bau GmbH, daylight planning was an essential part of the architectural concept: 'When planning the building, the brightness in the rooms was very important to us.' The Glass Roof in the atrium is a central element of this, says Noel: 'Although it is an interior space, we get a lot of natural light through the Glass Roof.'

Contact for the editorial office:

LAMILUX Heinrich Strunz GmbH
Celine Hofmann
Marketing Skylights
Zehstraße 2, 95111 Rehau

Phone.: +49 151 40592050
e-Mail: celine.hofmann@lamilux.de

An atrium of encounters

The atrium not only serves as a connecting element between the different parts of the building, but also as a meeting place: this is where colleagues gather for lunches and dinners, engage in spontaneous conversations or take creative breaks in between. The connection to nature is always maintained thanks to the Glass Roof - an effect that also has a positive impact on the body. 'Skylights are very important to us, as they can significantly increase the productivity, well-being and satisfaction of our employees - which ultimately has a positive effect on performance,' says Noel.

Modern technology meets architectural efficiency

In addition to the architectural design, the energy concept also plays a major role. The building is equipped with heating and cooling ceilings as well as a photovoltaic system that covers part of the energy requirements independently. The LAMILUX Glass Roof PR60 fits perfectly into this concept: With its excellent thermal insulation properties, high load-bearing capacity and the option of integrating shading or ventilation elements, it fulfils all the requirements of a sustainable building envelope.

Reliable partnership from planning to implementation

LAMILUX was quickly chosen to execute the Glass Roof - not only because of its technical performance, but also because of the partnership-based cooperation. 'The collaboration with LAMILUX was smooth right from the start - a real all-round carefree package that I would be happy to recommend,' summarises Noel.

Contact for the editorial office:

LAMILUX Heinrich Strunz GmbH
Celine Hofmann
Marketing Skylights
Zehstraße 2, 95111 Rehau

Phone.: +49 151 40592050
e-Mail: celine.hofmann@lamilux.de

A place with charisma - for companies that think ahead

With the Kompetenzzentrum Breisgau, a place has been created that not only impresses with its architecture, but also with its concept: working, collaborating, exchanging ideas - in a light-flooded environment that puts people at the centre. The LAMILUX Glass Roof PR60 makes this claim visible - and tangible.

...

www.lamilux.com

LAMILUX Heinrich Strunz Group, Rehau

Continuous rooflights, glass roofs or rooflights: the LAMILUX Heinrich Strunz Group is one of the leading manufacturers of skylights in Europe. The skylights ensure efficient use of natural daylight in a wide variety of buildings. In addition, special smoke and heat extraction systems provide safety in case of fire and are therefore essential components of fire protection concepts. LAMILUX is also known for its solutions for object smoke extraction. Furthermore, the medium-sized family business founded in 1909 is one of the world's largest producers of carbon and glass fibre reinforced plastics. These composite materials provide stability, lightweight construction and impact resistance for instance in roof, wall and floor linings in commercial vehicles. LAMILUX strives to be the innovation and performance leader in all areas relevant to its customers. The family-owned company, based in Rehau, Germany, is managed by Johanna and Dr. Alexander Strunz in the fourth generation, currently employs around 1,300 people, and in 2023 generated sales of around 354 million euros.

Contact for the editorial office:

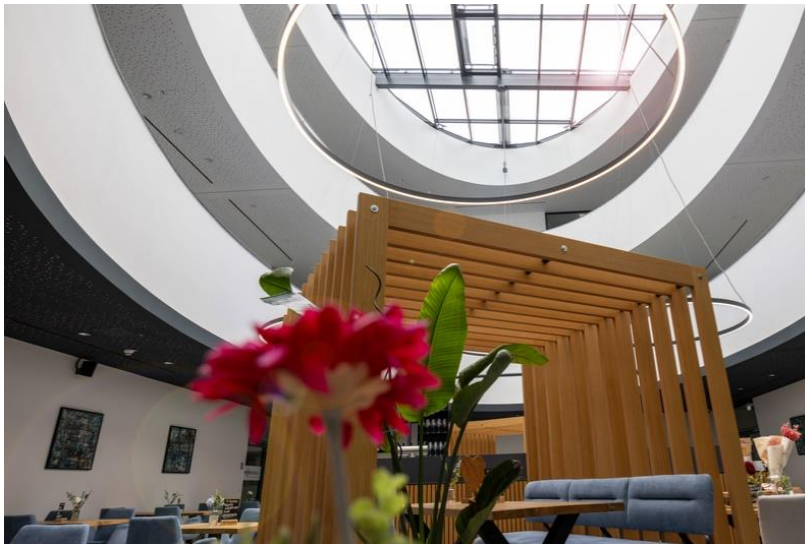
LAMILUX Heinrich Strunz GmbH
Celine Hofmann
Marketing Skylights
Zehstraße 2, 95111 Rehau

Phone.: +49 151 40592050
e-Mail: celine.hofmann@lamilux.de

Images



Sustainable flat roof utilisation thanks to skylights and photovoltaics



Daylight and a feel-good atmosphere in the restaurant

Contact for the editorial office:

LAMILUX Heinrich Strunz GmbH
Celine Hofmann
Marketing Skylights
Zehstraße 2, 95111 Rehau

Phone.: +49 151 40592050
e-Mail: celine.hofmann@lamilux.de



Attractive symmetry of the atrium thanks to the customised Glass Roof PR60

Contact for the editorial office:

LAMILUX Heinrich Strunz GmbH
Celine Hofmann
Marketing Skylights
Zehstraße 2, 95111 Rehau

Phone.: +49 151 40592050
e-Mail: celine.hofmann@lamilux.de