



EZ1 - Milton Park, Abingdon

## Essential Info

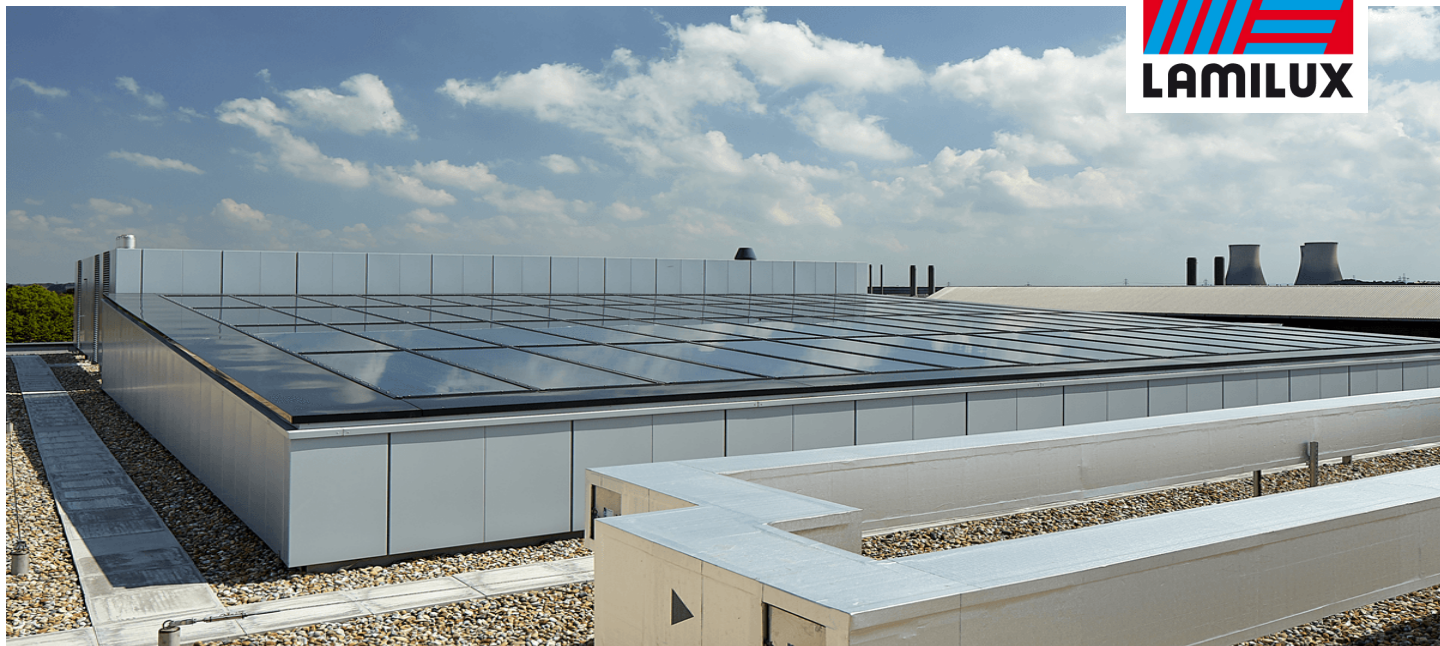
Place / Country:	Abingdon, England
Year:	2016
Building Type:	Commercial Building
Lösungen:	Glass Roof PR60

This pre-let contemporary, high end commercial building on Milton Park, Oxford is home to a prestigious office and laboratory headquarters. The Glass Roof PR60 3° continuous atrium rooflight was carefully designed and installed, complete with framing detail, to ensure a seamless transition to the wall abut at the head, whilst sitting onto perimeter supports at the verge and cill. Covering a space of fourteen metres wide by fifteen metres long, each of the sixty panes of glass measured approximately 1,000mm x 3,500mm. LAMILUX were able to provide a better solution, with bigger panes, than the original concept, with the panes arranged in four flush tiers with three transom mullions fitting onto the I beams.

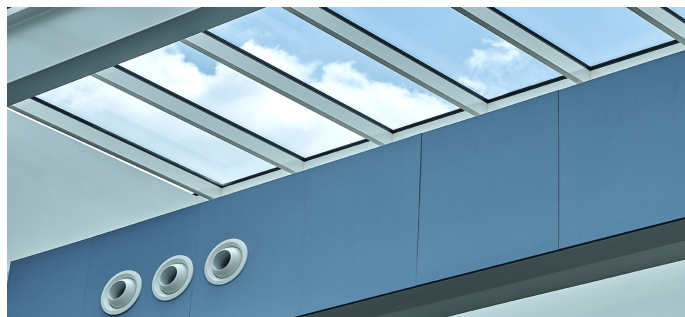
To prevent overheating in the summer, a high performance glazing, with a silver coating was used, which was designed and installed to be walked on for cleaning and maintenance purposes.



# Reference



EZ1 - Milton Park, Abingdon



**LAMILUX HEINRICH STRUNZ GMBH**

POB 1540 - 95105 Rehau/Germany - Phone: +49 (0)9283/595-0 - Fax: +49 (0)9283/595-290

E-Mail: [information@lamilux.com](mailto:information@lamilux.com) - [www.lamilux.com](http://www.lamilux.com)