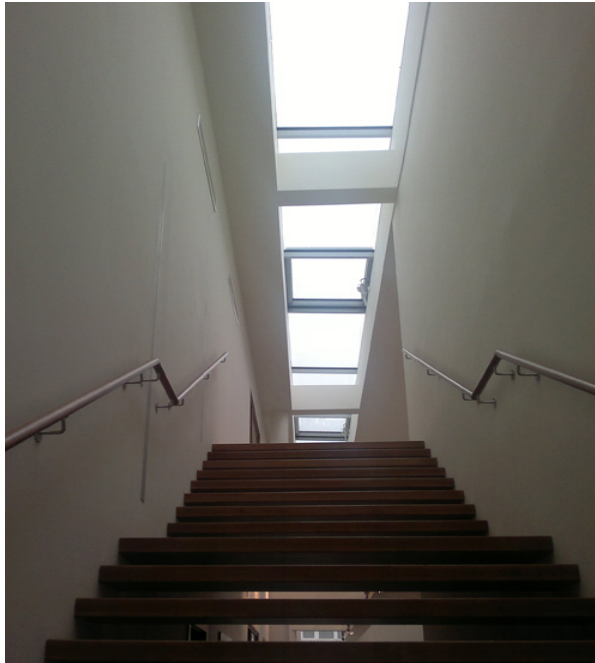


# Reference

LAMILUX CI System Glass Architecture PR60



Flower auction hall, Vienna, Austria

## Essential Info

Place / Country:	Vienna, Austria
Year:	2012
Building type:	Retail facility
Solutions:	Glass Roof KWS 60 CI System fan blade M Glass Skylight F100

After only 6 months of construction time, the new Hyundai flagship store in Vienna opened its doors. With a full-front glass façade as well as an approx. 50 m long Continuous Rooflight made of glass, a lot of daylight gets into this two-storied building. The skylight strip, which separates the existing building from the new construction, creates a showroom bathed in light. A view right from the street deep into the building is a result of this effect.

- KWS 60 as shed roof with surface inclination 2°, length 1,25m, width 48,3m, composed of 28 glass panels, total weight 3,5 t, Ug Value: 1,1 W/m<sup>2</sup>K, Rp = 40 dB incl. 2 bent panes in the glazing.
- LAMILUX CI System fan blade M, 5 pieces

## LAMILUX HEINRICH STRUNZ GMBH

POB 1540 - 95105 Rehau/Germany - Phone: +49 (0)9283/595-0 - Fax: +49 (0)9283/595-290

E-Mail: [information@lamilux.com](mailto:information@lamilux.com) - [www.lamilux.com](http://www.lamilux.com)

# Reference

LAMILUX CI System Glass Architecture PR60



Flower auction hall, Vienna, Austria



**LAMILUX HEINRICH STRUNZ GMBH**

POB 1540 - 95105 Rehau/Germany - Phone: +49 (0)9283/595-0 - Fax: +49 (0)9283/595-290

E-Mail: [information@lamilux.com](mailto:information@lamilux.com) - [www.lamilux.com](http://www.lamilux.com)